

# RAPID-SW MICHIGAN COMMUNITY VOICES PROJECT

Data Briefing- Recruitment Survey 1  
August 29th, 2023

**RAPID**

Stanford | Center on  
Early Childhood

pulse)))  
© the W.E. Upjohn Institute for Employment Research

# OVERVIEW

- Sample Disclaimer of the Initial Recruitment Survey
- Child Care Access
  - Use of Non-Parental Care
  - Difficulty Finding Child Care
- Child Care Utilization
  - Child Care Types
  - Time to Use Child Care
- Child Care Preferences
  - New Parent Ideal Child Care Arrangement
  - Ideal Child Care Arrangement When Having Equal Access
- Child Care Subsidy

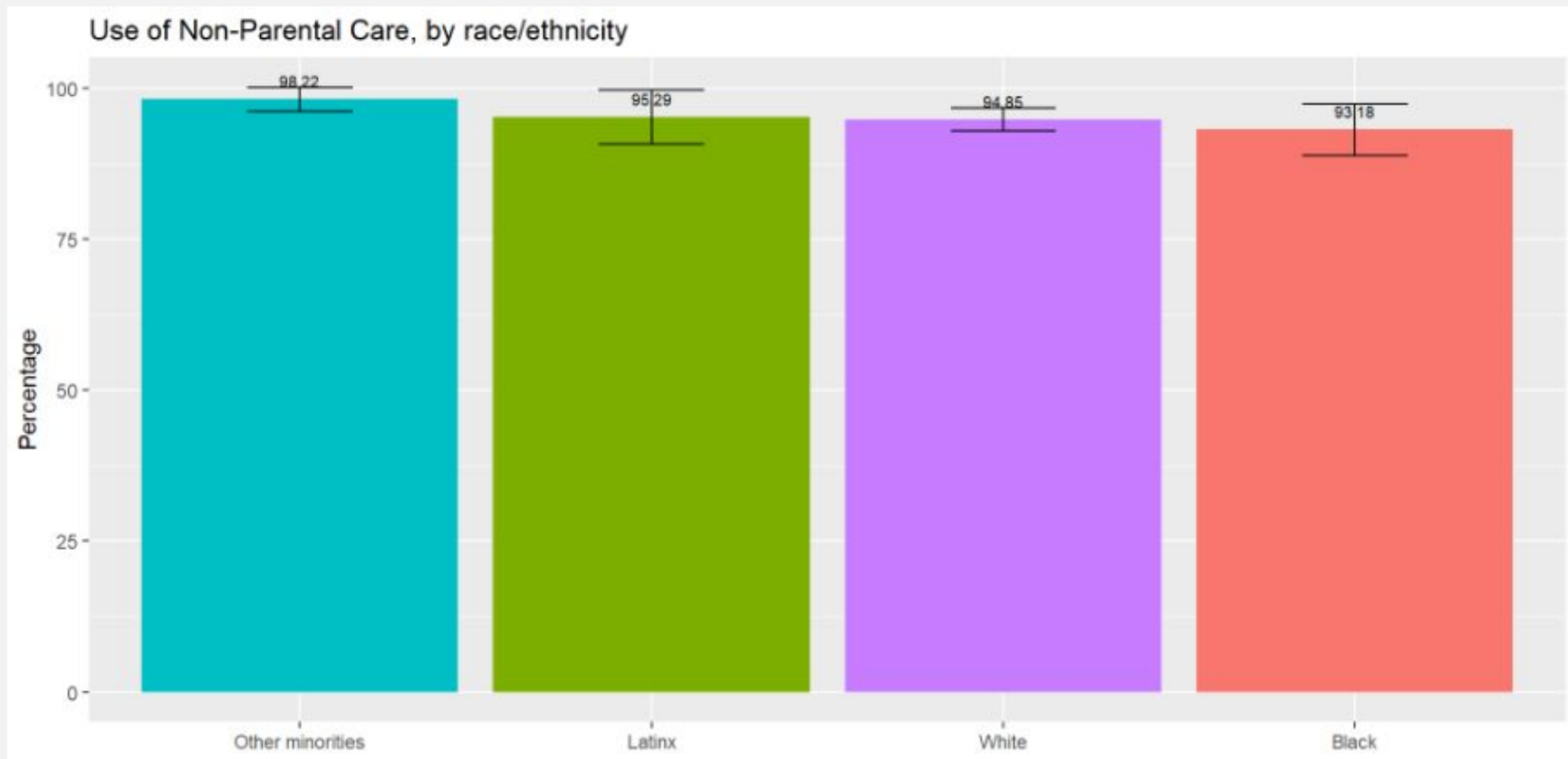
# Sample Disclaimer for the Initial Recruitment Survey

- Data from 910 parents of young children under 6 years old
- Between April 26<sup>th</sup> – May 9<sup>th</sup>, 2023
- Race/Ethnicity:
  - 14.81% (n = 134) Black
  - 9.39% (n = 85) Latinx
  - 18.90% (n = 171) other racial/ethnic groups (including 76 Native American, 50 Asian, 42 Pacific Islander, 2 other races)
  - 56.90% (n = 515) White
- Income Levels:
  - 26.00% (n = 222) below 200% FPL
  - 68.03% (n = 581) 200%-400% FPL
  - 5.97% (n = 51) above 400% FPL
- 4.55% single-parent households
- 2.44% have children with disabilities
- Counties:
  - Berrien County: 21.67%, n = 197
  - Branch County: 6.60%, n = 60
  - Calhoun County: 15.73%, n = 143
  - Cass County: 9.02%, n = 82
  - Kalamazoo County: 26.40%, n = 240
  - St. Joseph County: 8.69%, n = 79
  - Van Buren County: 11.88%, n = 108

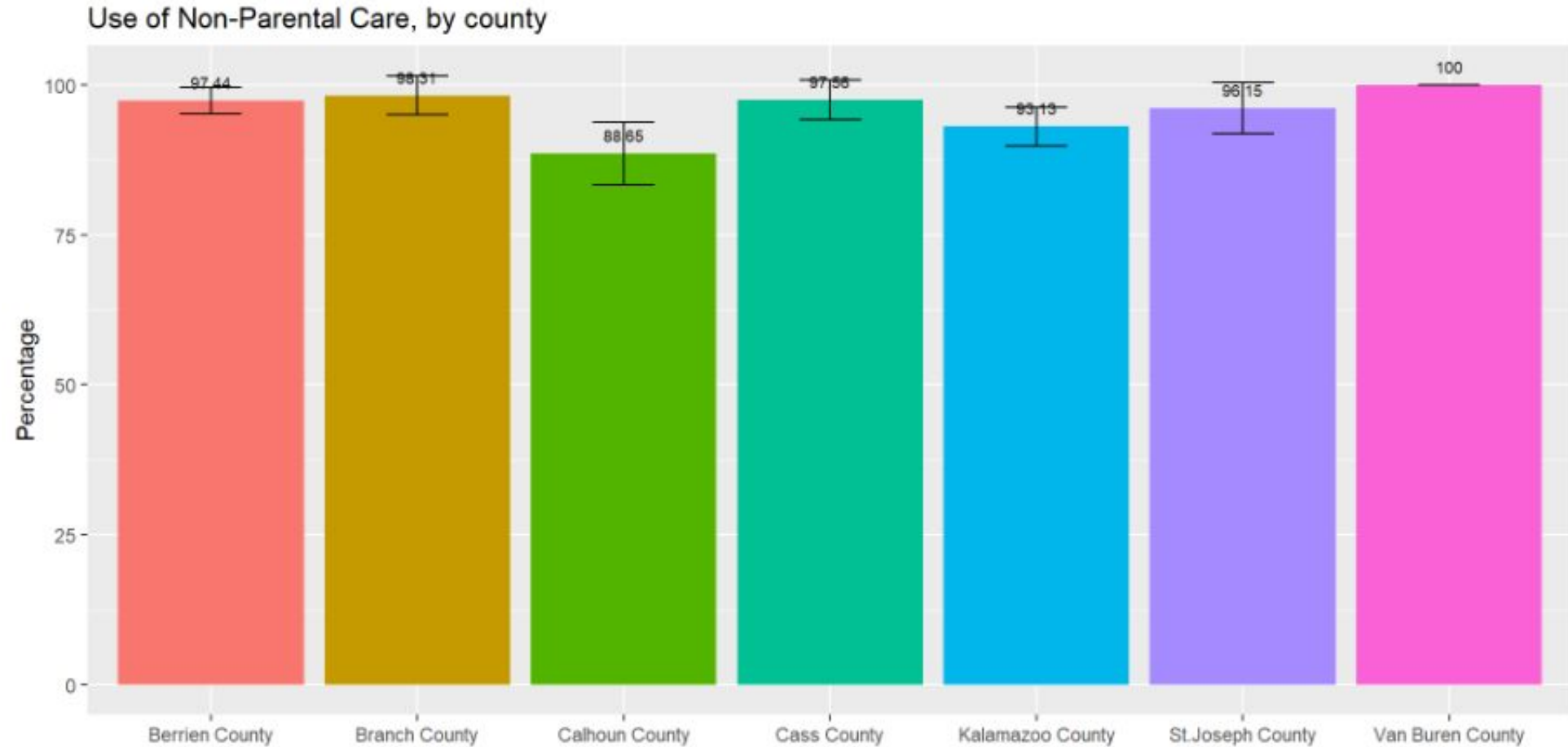
# Child Care Access

# Use of Non-Parental Care & by Race/Ethnicity

- Among all participants, **95.2%** used non-parental care for their child(ren) under the age of 6 years.



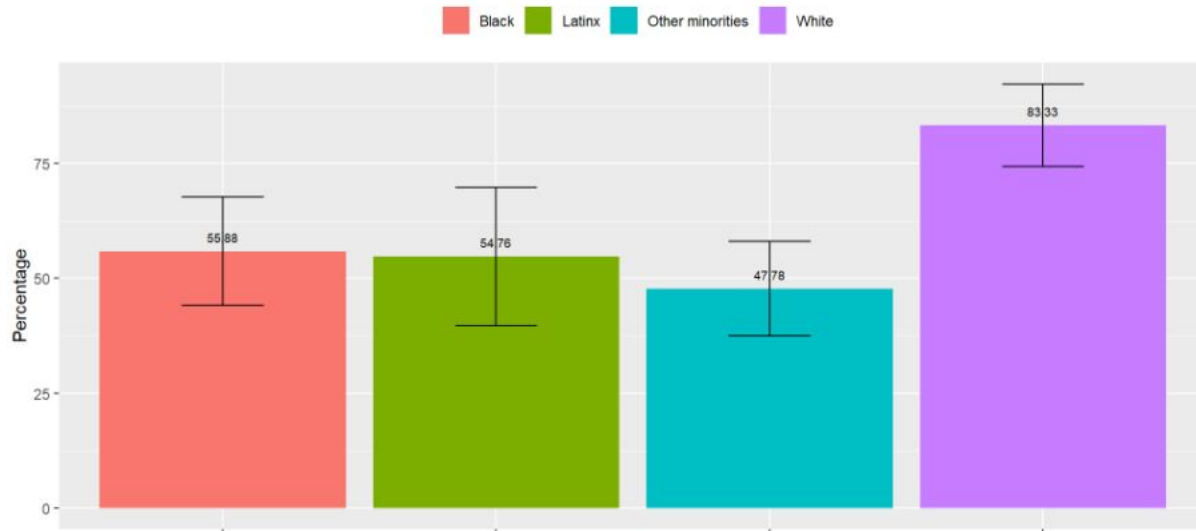
# Use of Non-Parental Care by County



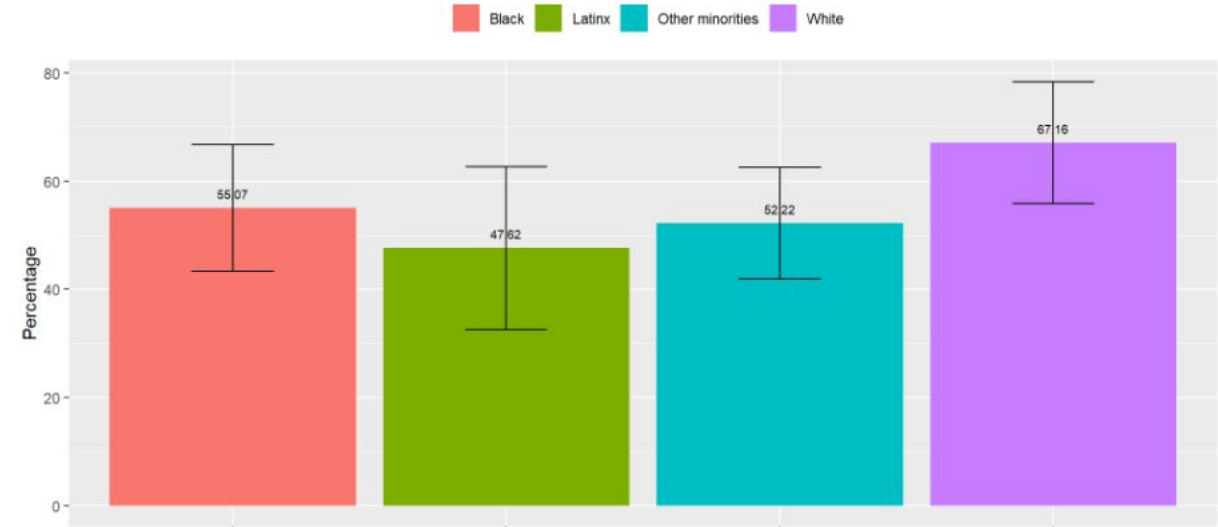
# Difficulty Finding Child Care & by Race/Ethnicity

- Among all participants, **59.6%** had difficulty finding space in a home- or center-based child care program in the past month.
- Among all participants, **56.1%** had difficulty finding other types of child care (e.g., sitter, nanny) in the past month.

Difficulty Finding Home- or Center-Based Program, by race/ethnicity

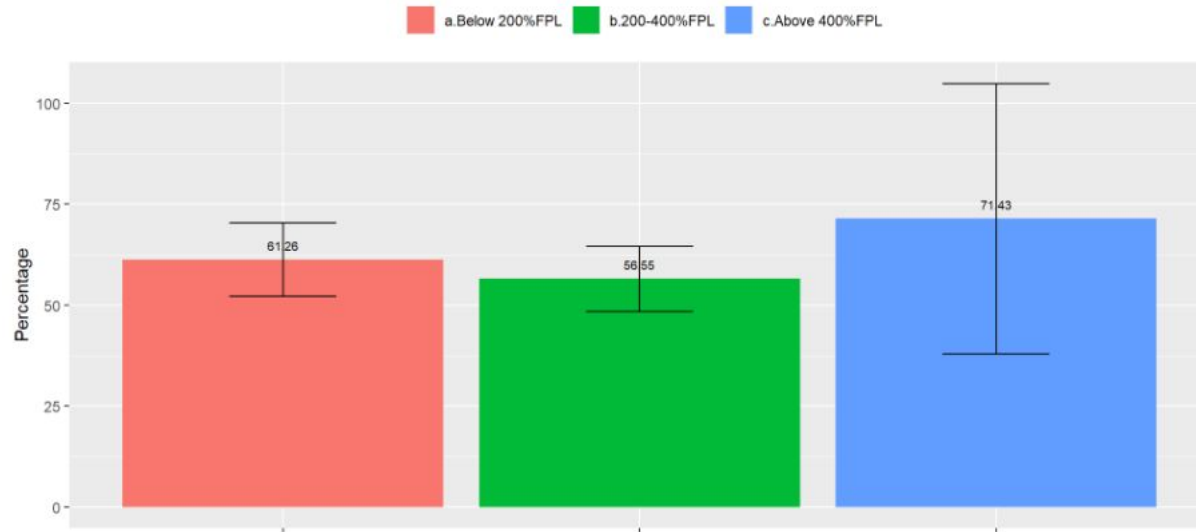


Difficulty Finding Other Types of Child Care, by race/ethnicity

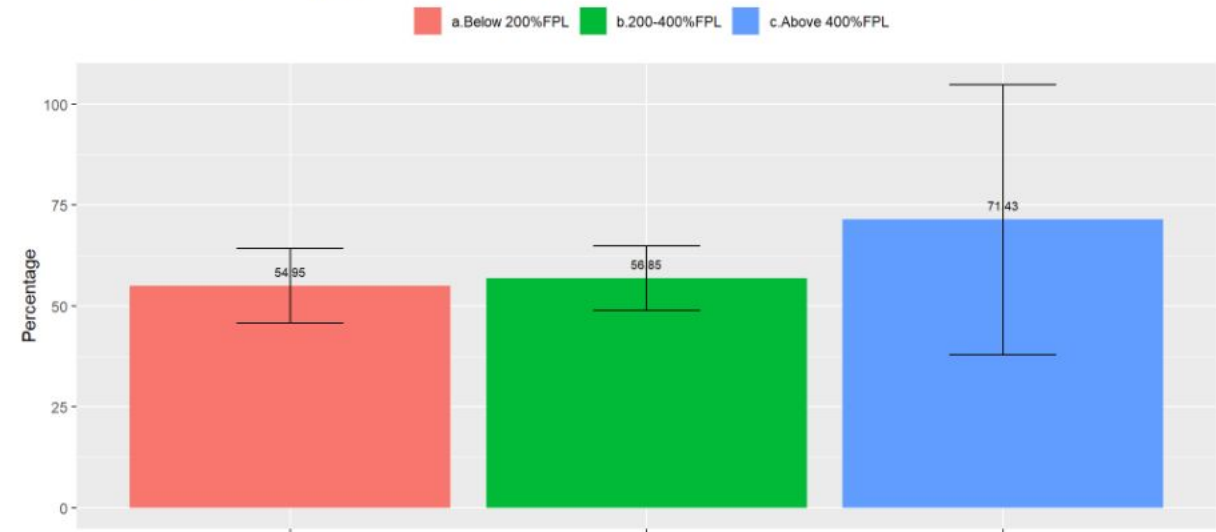


# Difficulty Finding Child Care by Income Levels

Difficulty Finding Home- or Center-Based Program, by income levels



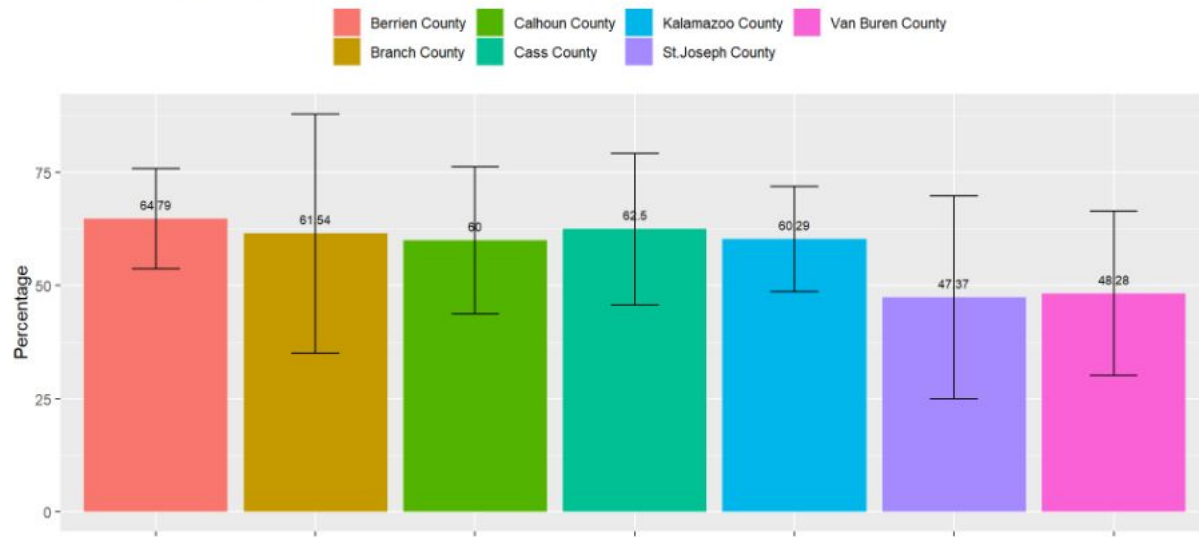
Difficulty Finding Other Types of Child Care, by income levels



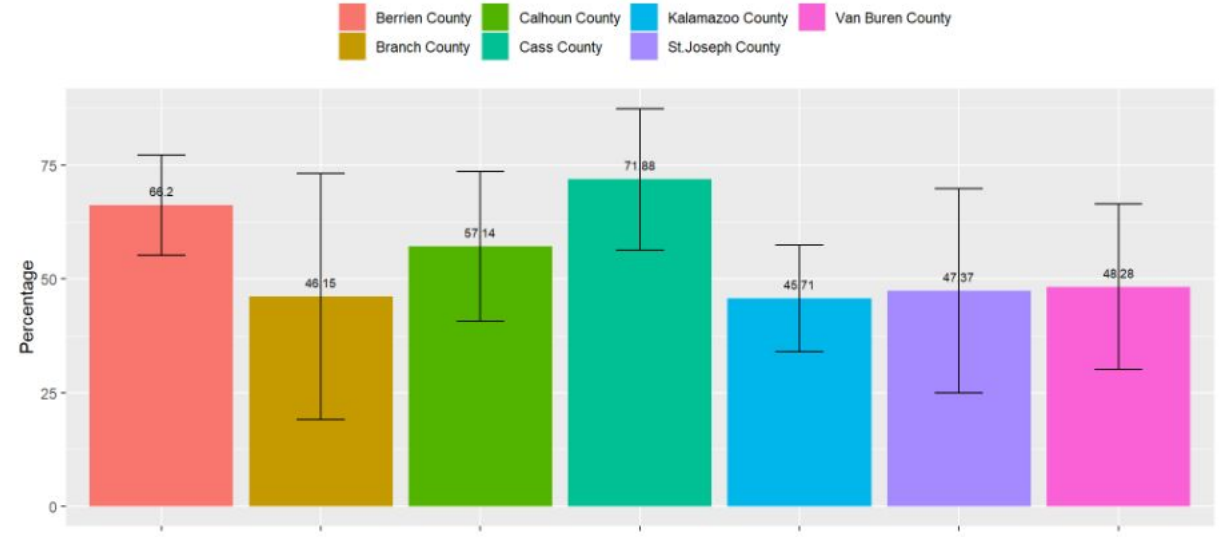


# Difficulty Finding Child Care by Income Levels

Difficulty Finding Home- or Center-Based Program, by county



Difficulty Finding Other Types of Child Care, by county

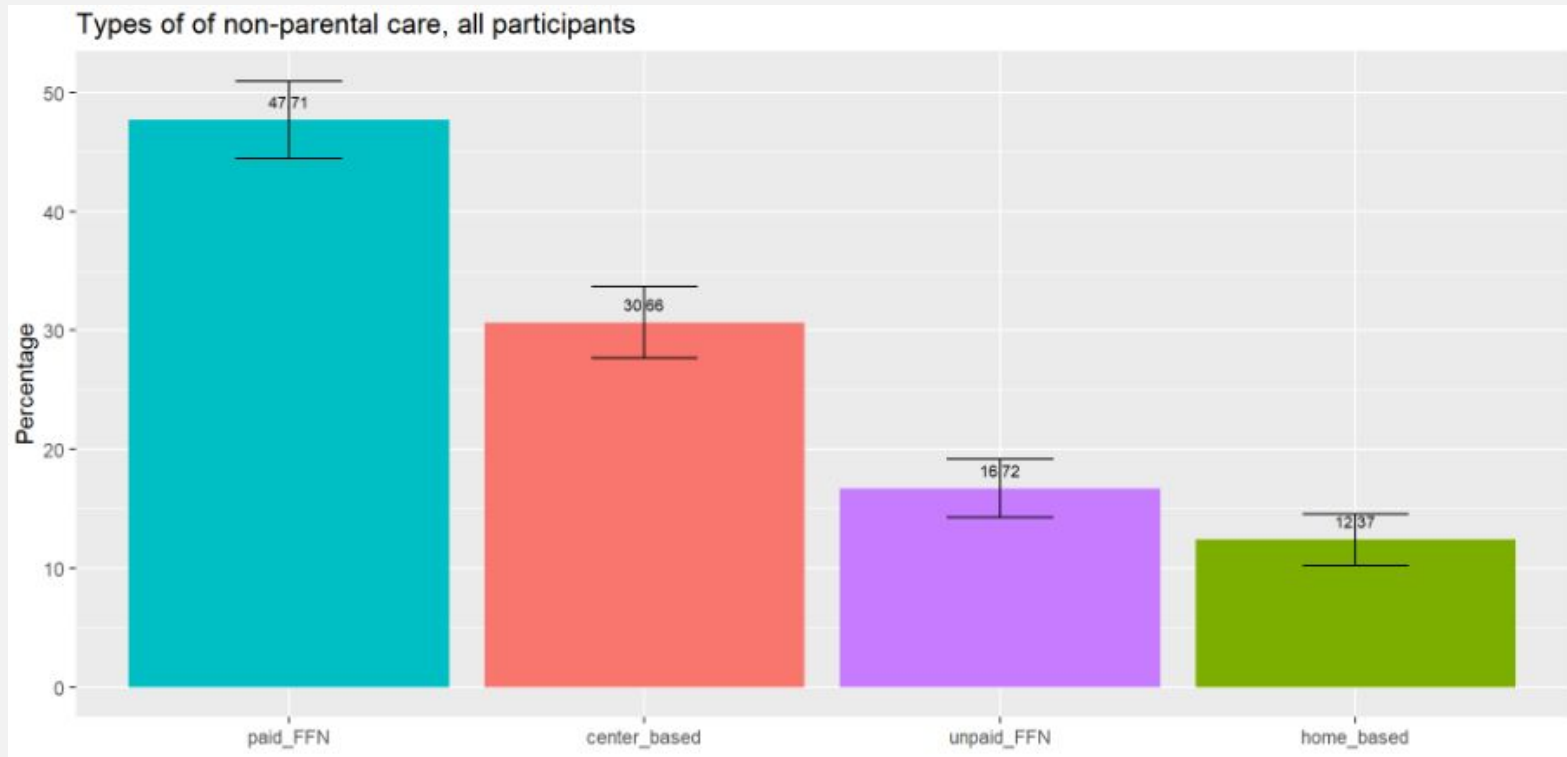


# Child Care Utilization

# Child Care Types

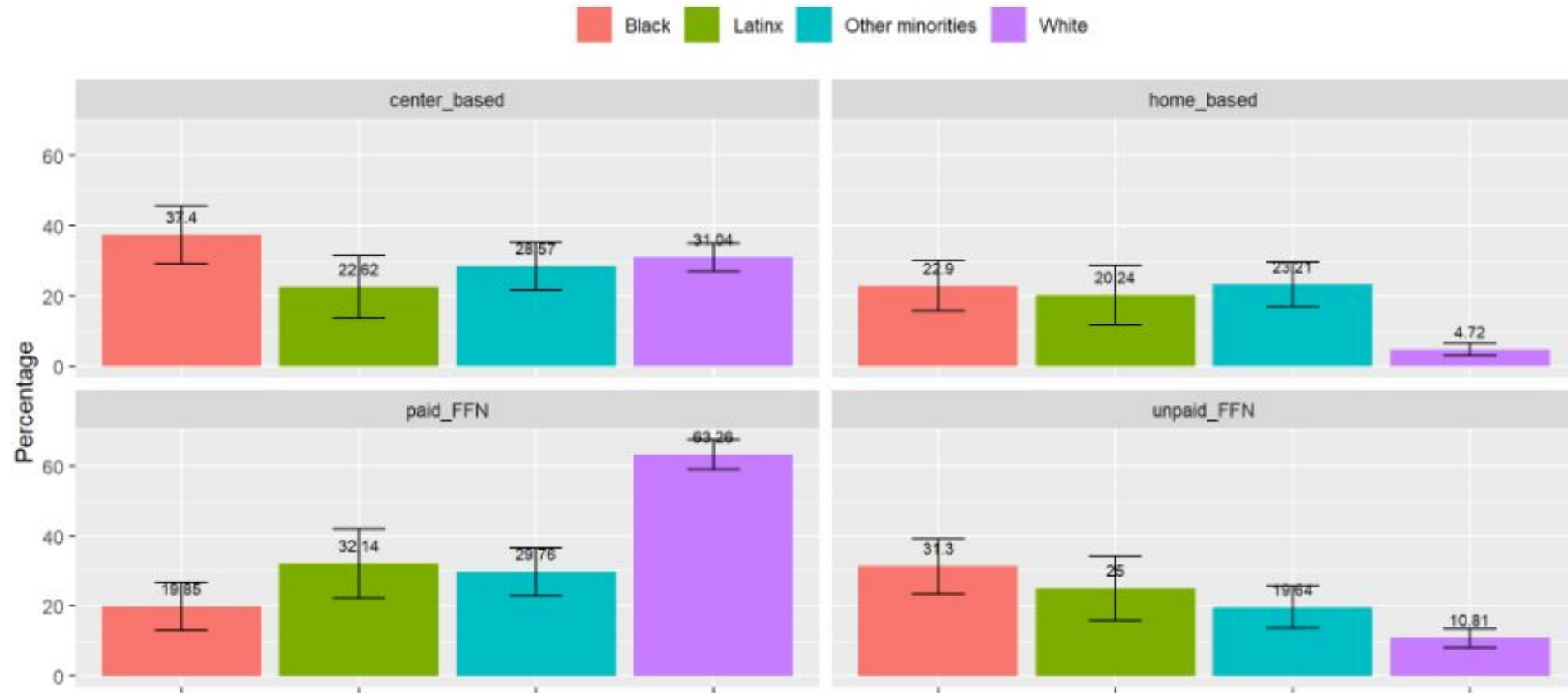
Survey question: Currently, which of the following types of child care do you use for your child(ren) under the age of 6 years for at least 5 hours per week? Select all that apply.

- Any type of paid or unpaid center-based care, such as a pre-school, day care center, public pre-kindergarten, Head Start, or faith-based nursery school. Please do not include kindergarten.
- At least five hours of unpaid care by a relative, friend or neighbor for any child under 6
- At least five hours of paid care by a relative, friend or neighbor for any child under 6
- At least 5 hours of paid care from a home-based child care provider. Please include home-based care where the provider is paid to care for your child even if you are not making the payment



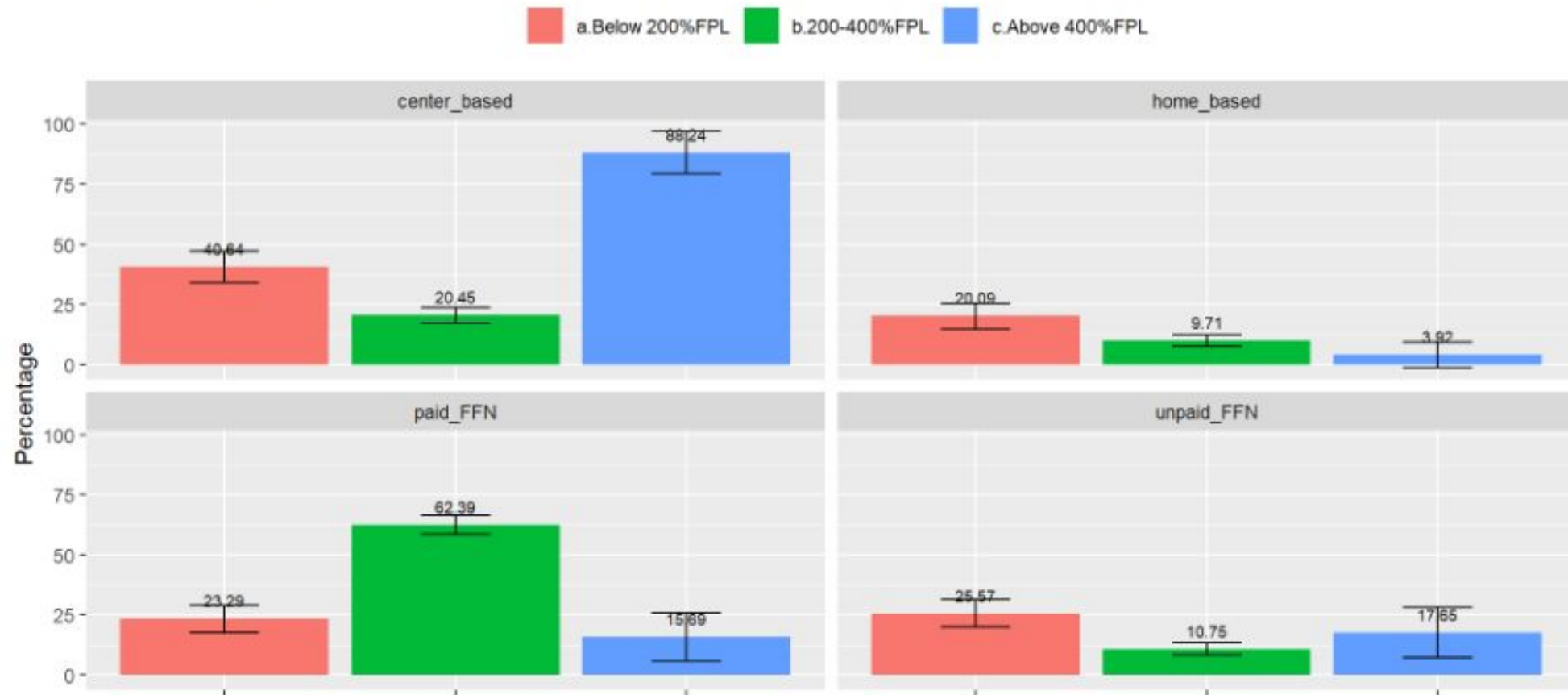
# Child Care Types by Race/Ethnicity

Types of of non-parental care, by race/ethnicity



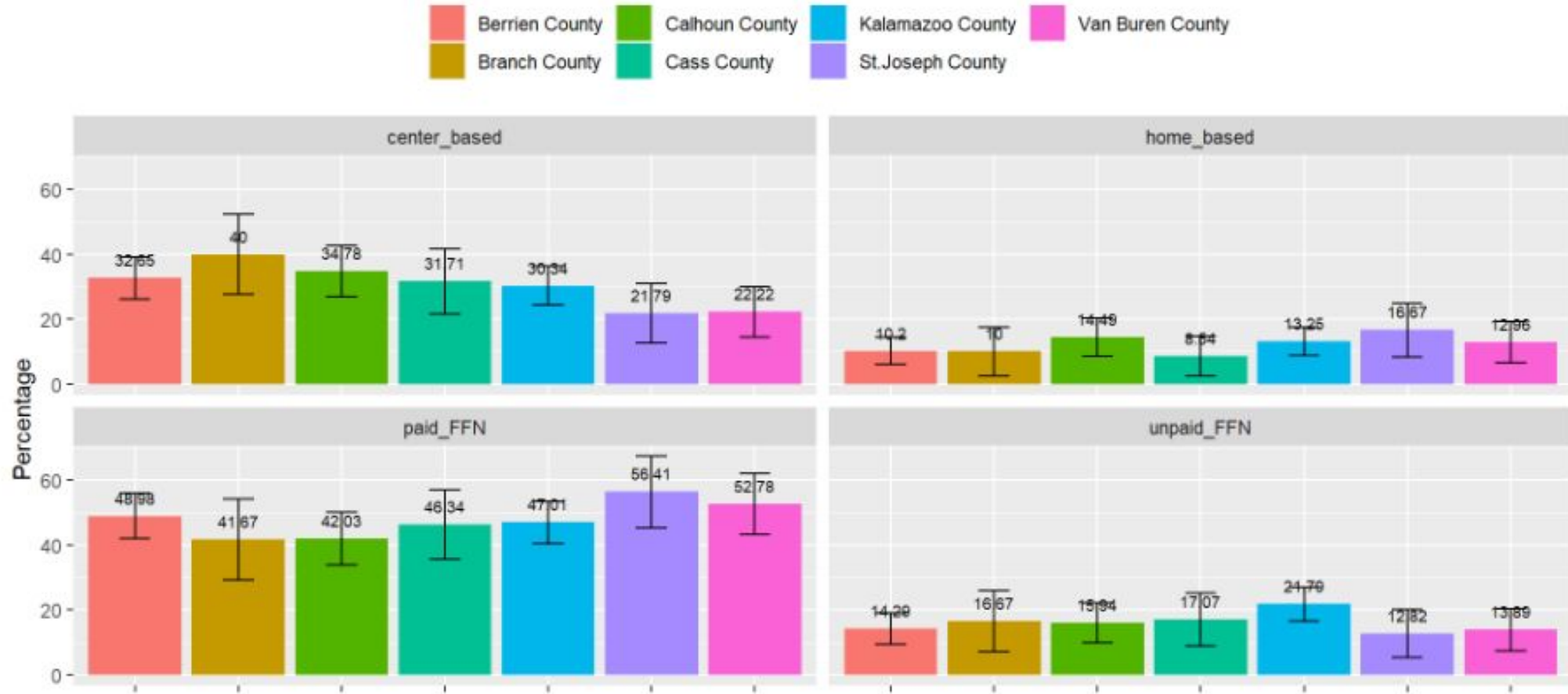
# Child Care Types by Income Levels

Types of of non-parental care, by income levels



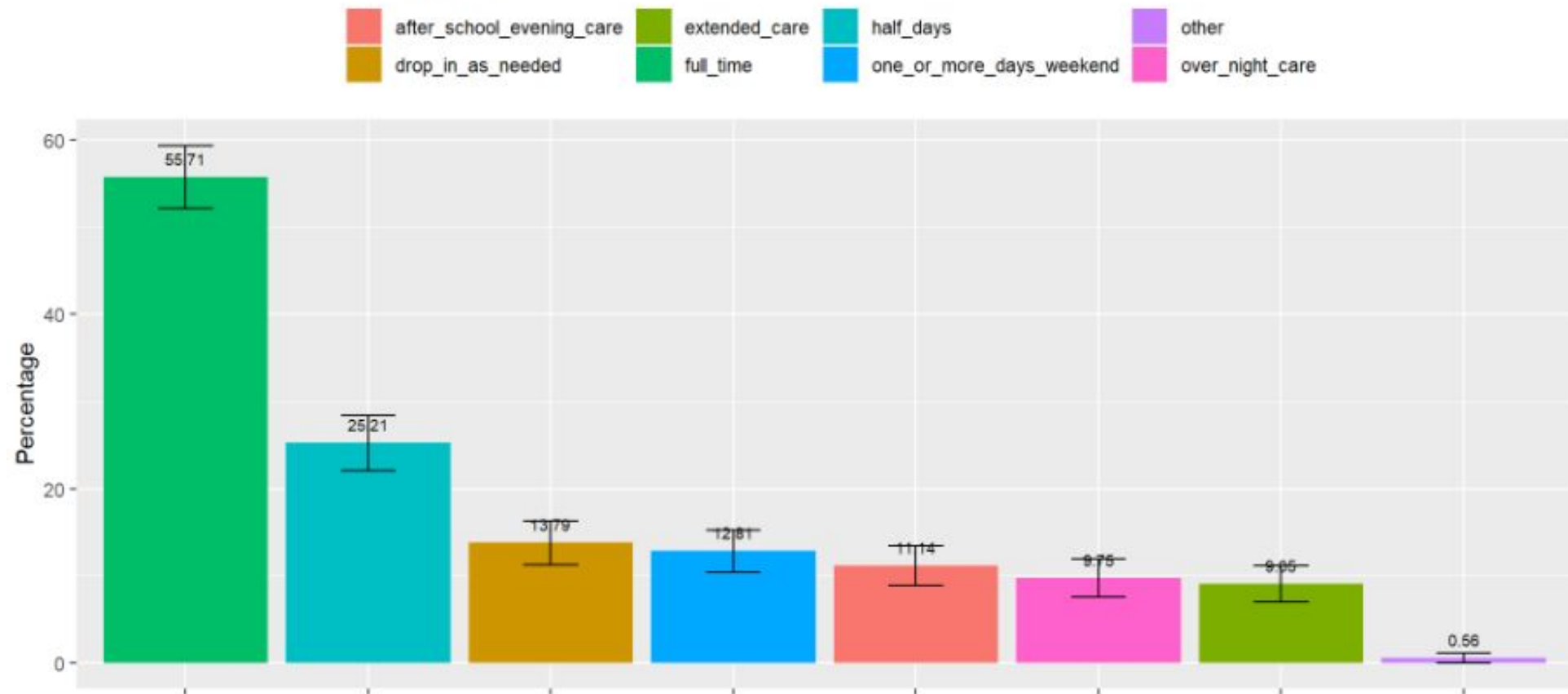
# Child Care Types by County

Types of of non-parental care, by county



# Time to Use Child Care

Time to Use Child Care, all participants (n = 718)



# Time to Use Child Care by Race/Ethnicity

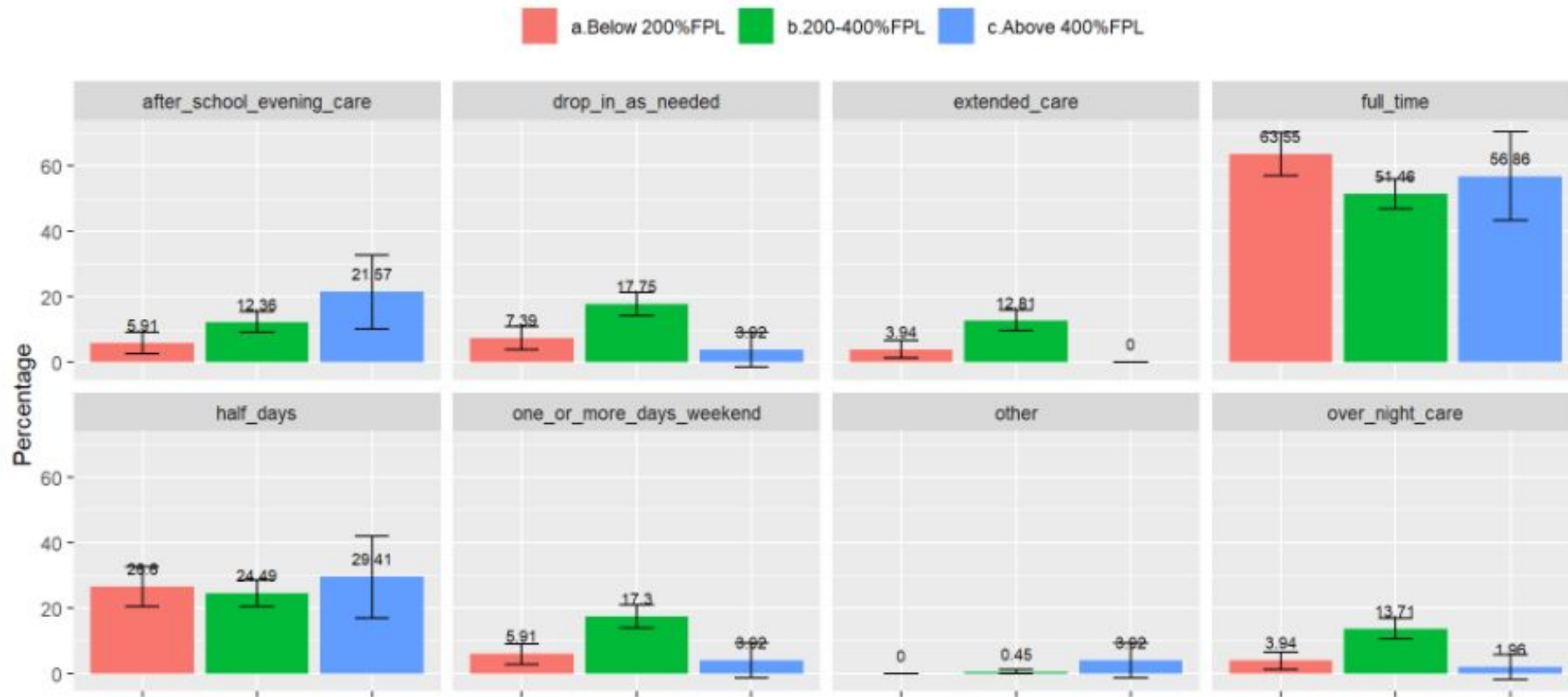
Time to Use Child Care, by race/ethnicity





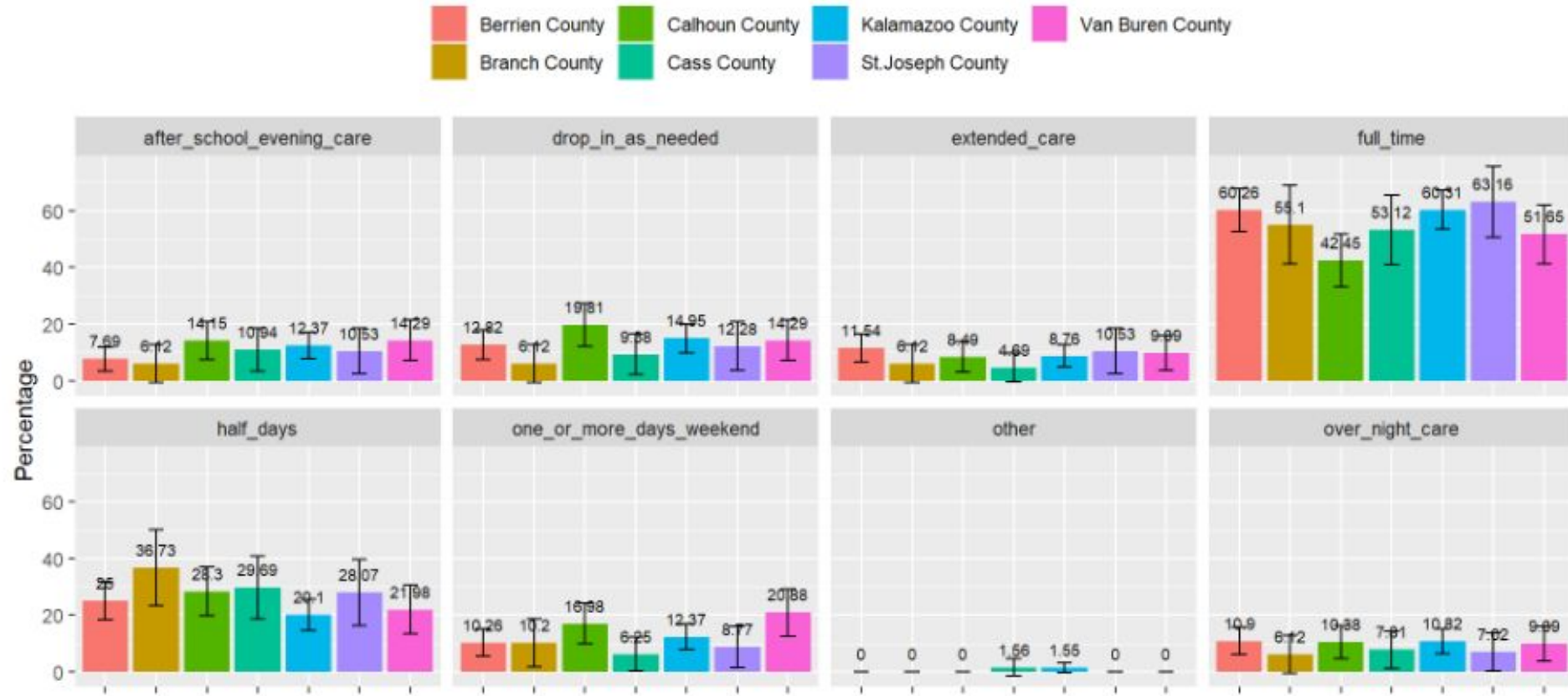
# Time to Use Child Care by Income Levels

Time to Use Child Care, by income levels



# Time to Use Child Care by County

Time to Use Child Care, by county



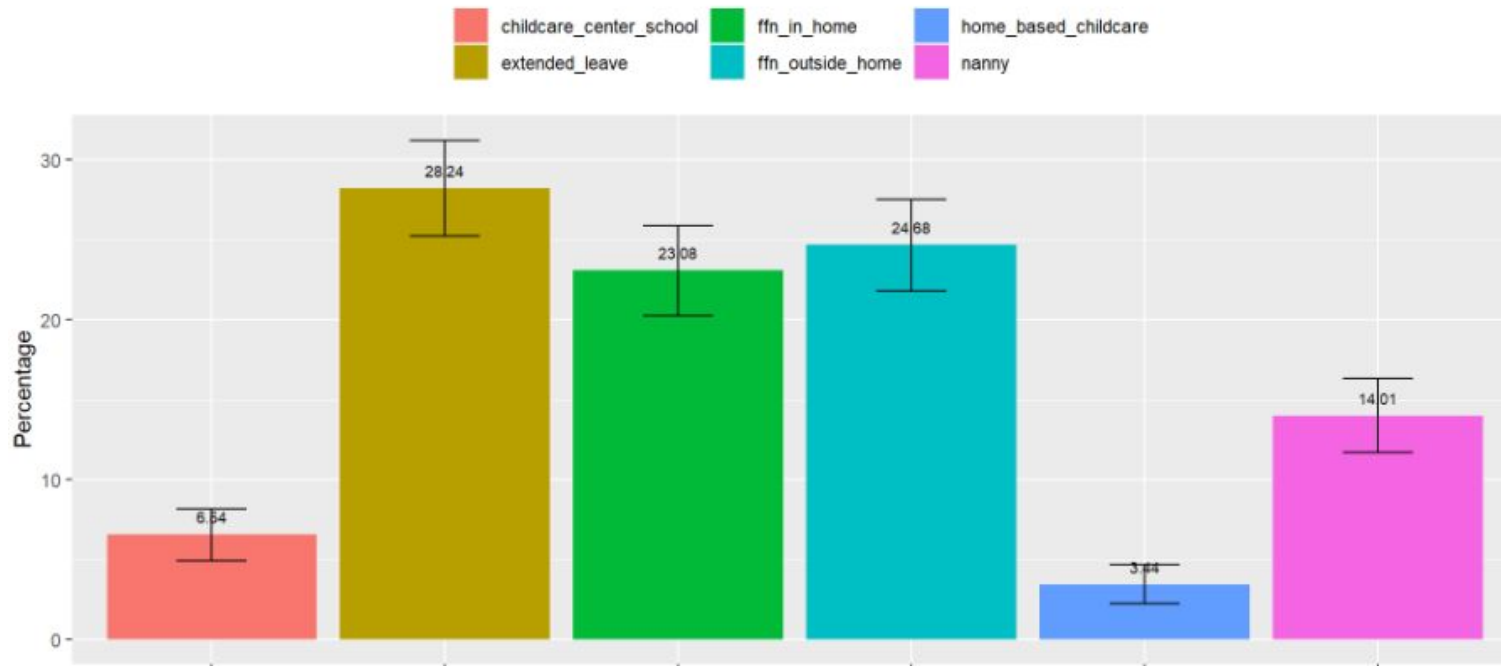
# Child Care Preferences

# New Parent Ideal Child Care Arrangement

Survey Question: When you were a new parent, what would your most ideal childcare arrangement have been?

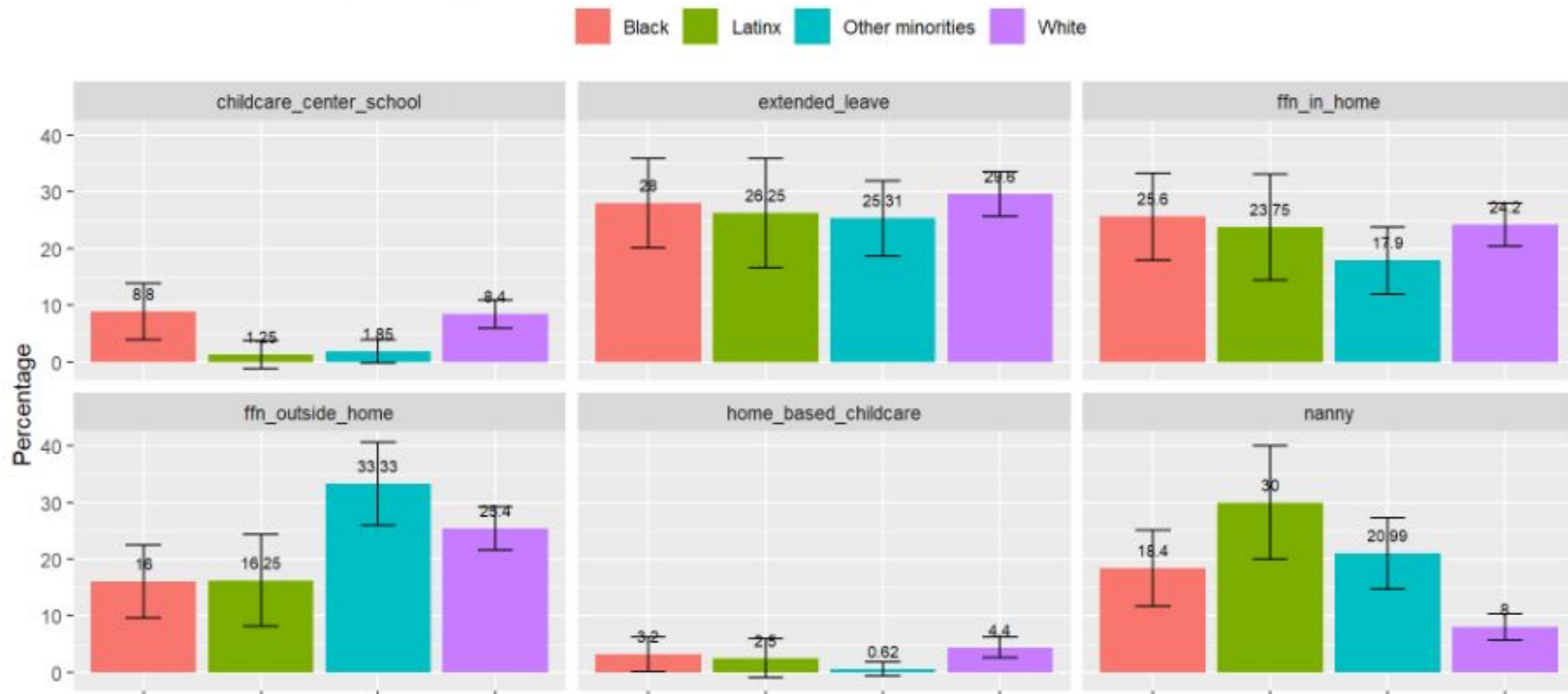
- Extended leave or financial support so I could stay home with my child(ren)
- Friends/extended family members (other than parents)/neighbors in my home
- Friends/extended family members (other than parents)/neighbors outside of my home
- Nanny or nanny share in my home
- Licensed childcare in a home-based setting outside of my home (e.g., family childcare home)
- Childcare center or school
- Not listed

Ideal Child Care Arrangement, all participants



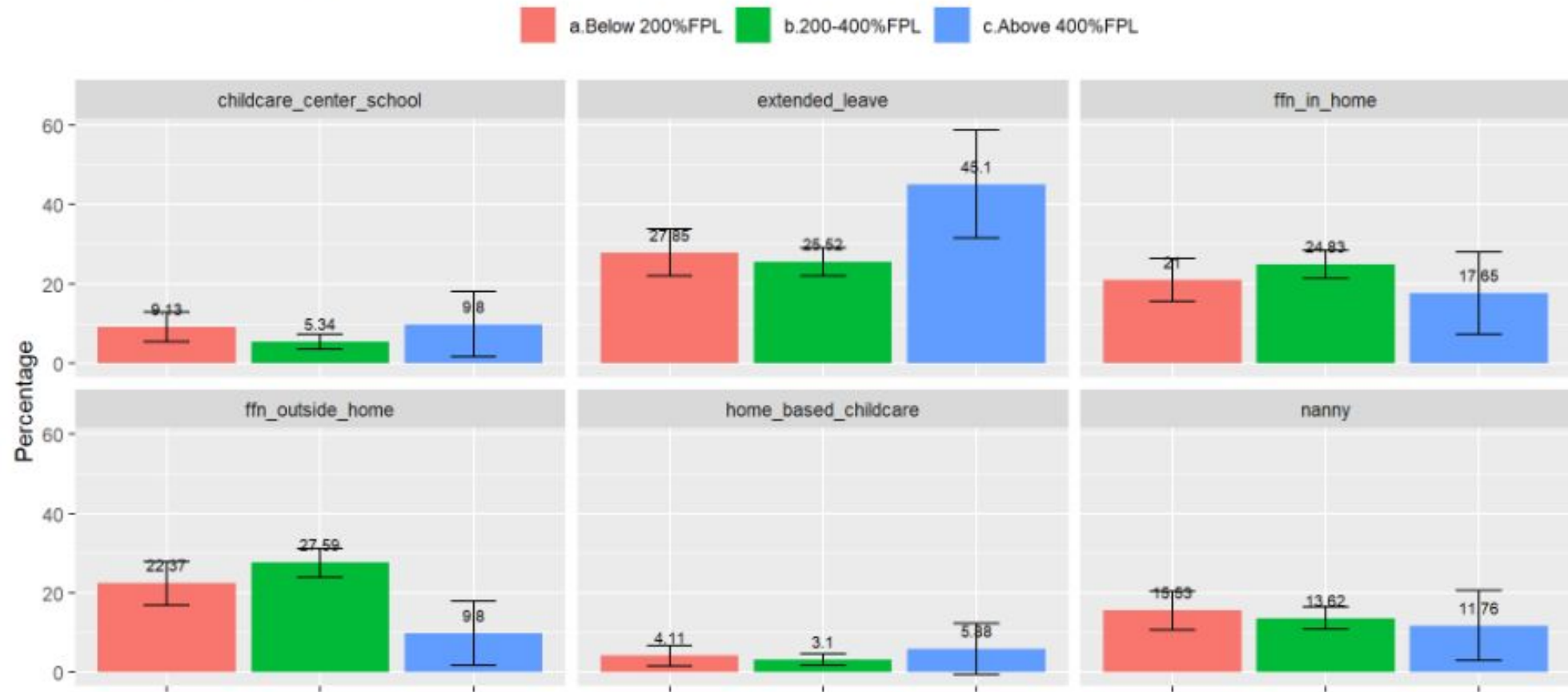
# New Parent Ideal Child Care Arrangement by Race/Ethnicity

Ideal Child Care Arrangement, by race/ethnicity



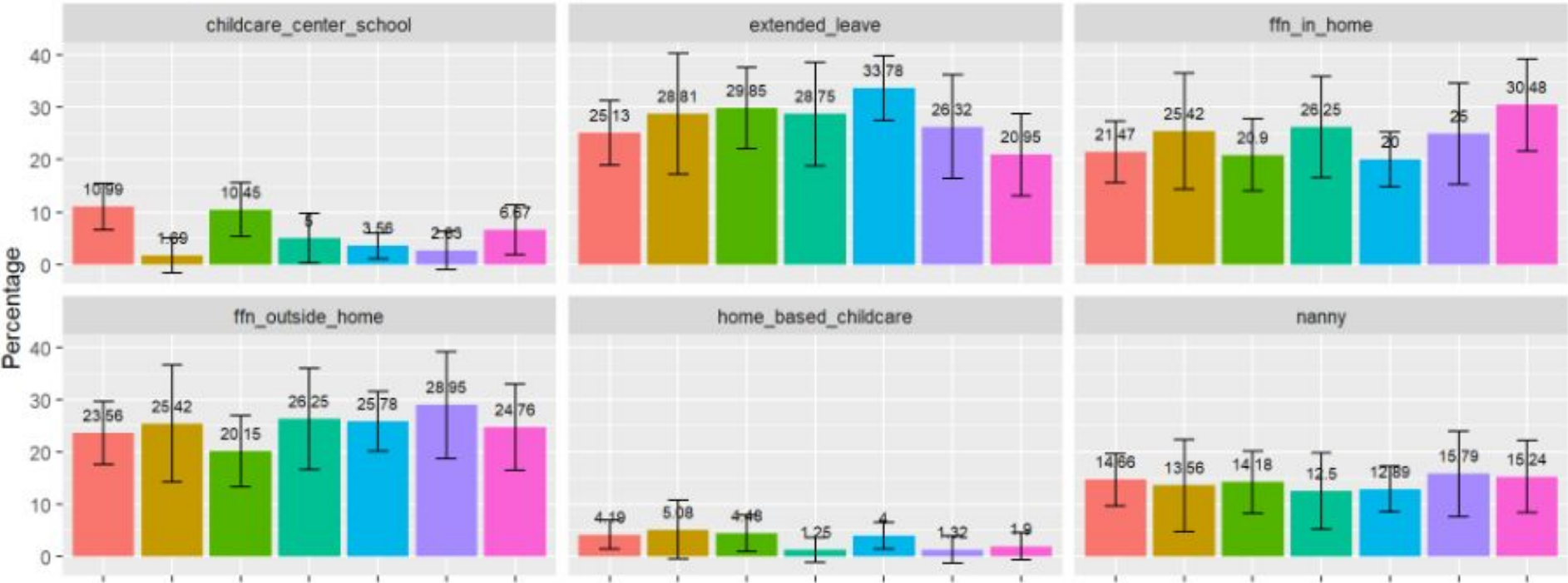
# New Parent Ideal Child Care Arrangement by Income Levels

Ideal Child Care Arrangement, by income levels



# New Parent Ideal Child Care Arrangement by County

Ideal Child Care Arrangement, by county

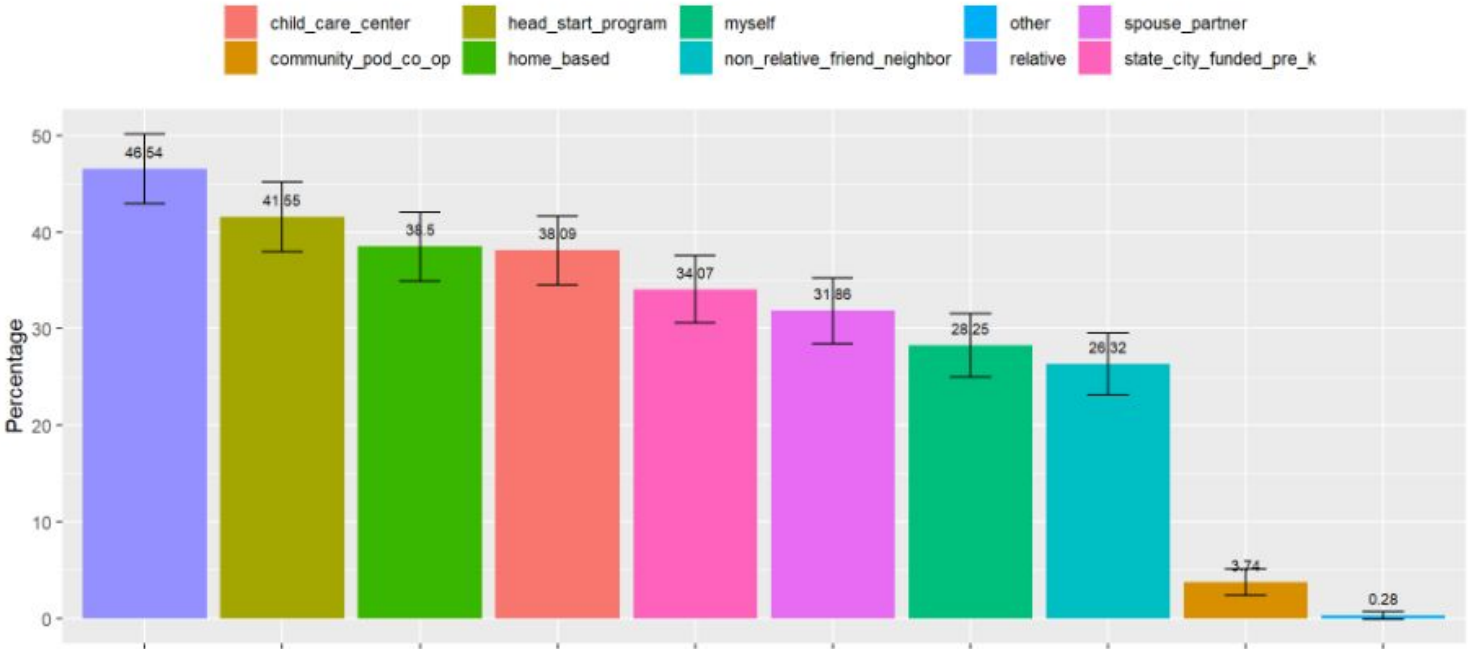


# Ideal Child Care Arrangement When Having Equal Access

Survey Question: If all types of arrangements were equally priced and equally accessible to your family what would be your ideal child care arrangement for your youngest child? (Select all that apply)

- Child Care Center
- Home-based
- State or city-funded Pre-K program (that may operate in a center or school)
- Head Start program (that may operate in a center or school)
- Relative (e.g., grandparent, aunt/uncle)
- I would provide care for my child
- My spouse/partner would provide care for our child
- Non-relative friend or neighbor
- Community pod or co-op
- Other

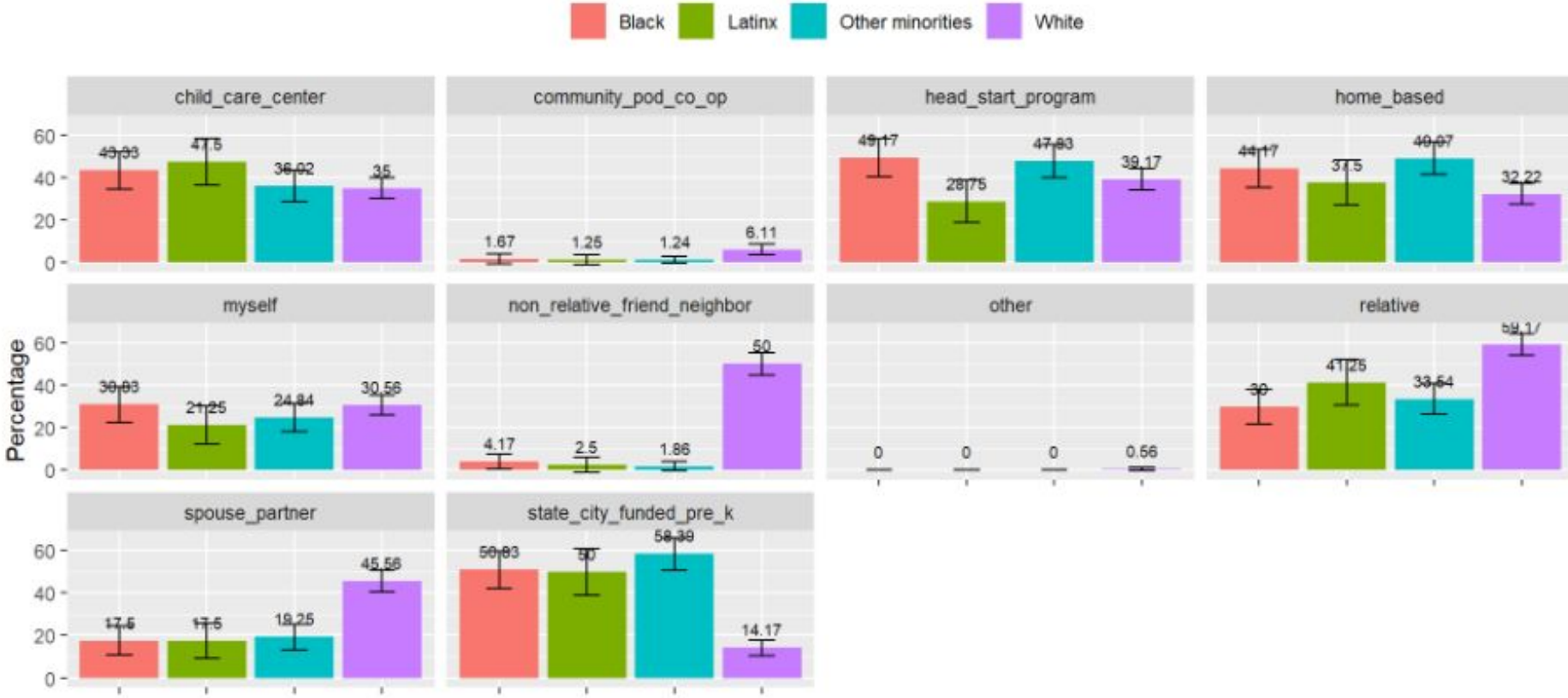
Ideal Child Care Arrangement When Having Equal Access, all participants (n = 722)





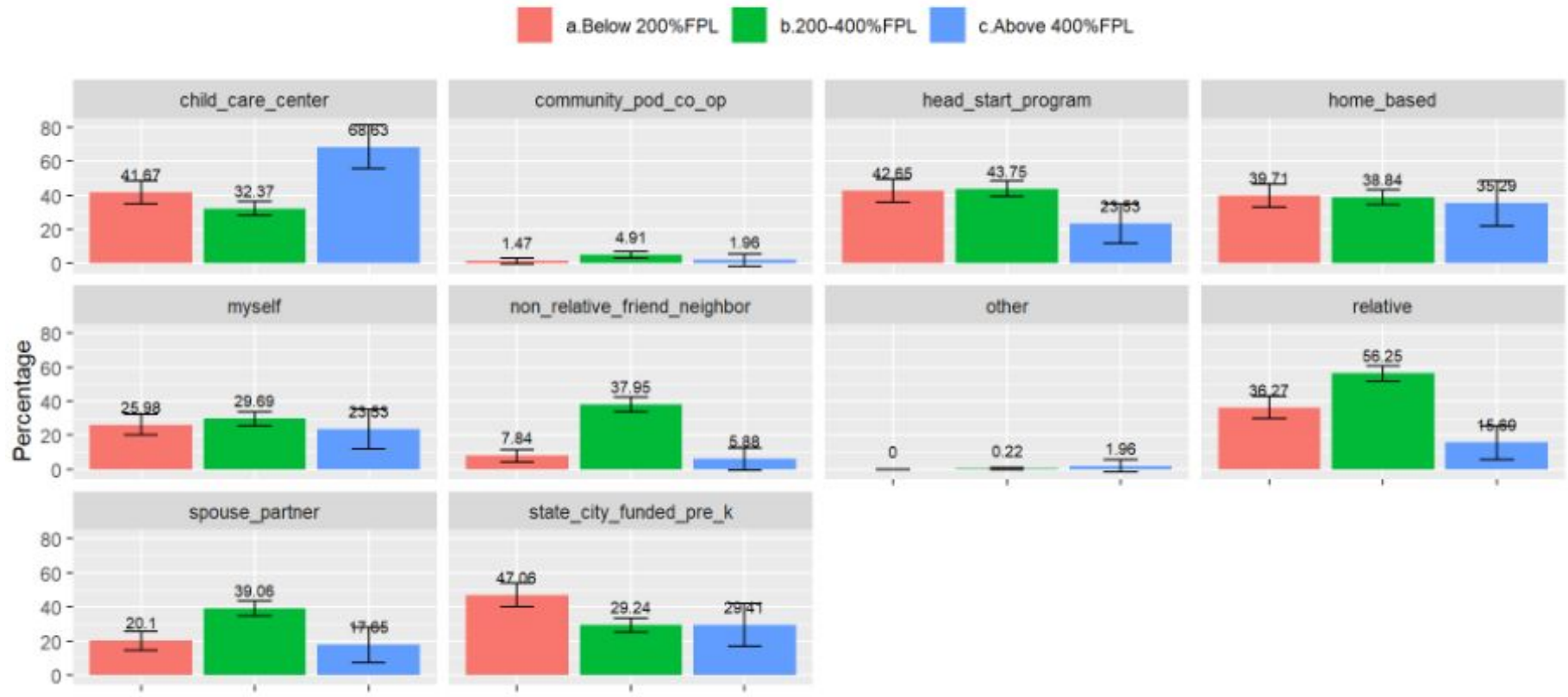
# Ideal Child Care Arrangement When Having Equal Access by Race/Ethnicity

Ideal Child Care Arrangement When Having Equal Access, by race/ethnicity



# Ideal Child Care Arrangement When Having Equal Access by Income Levels

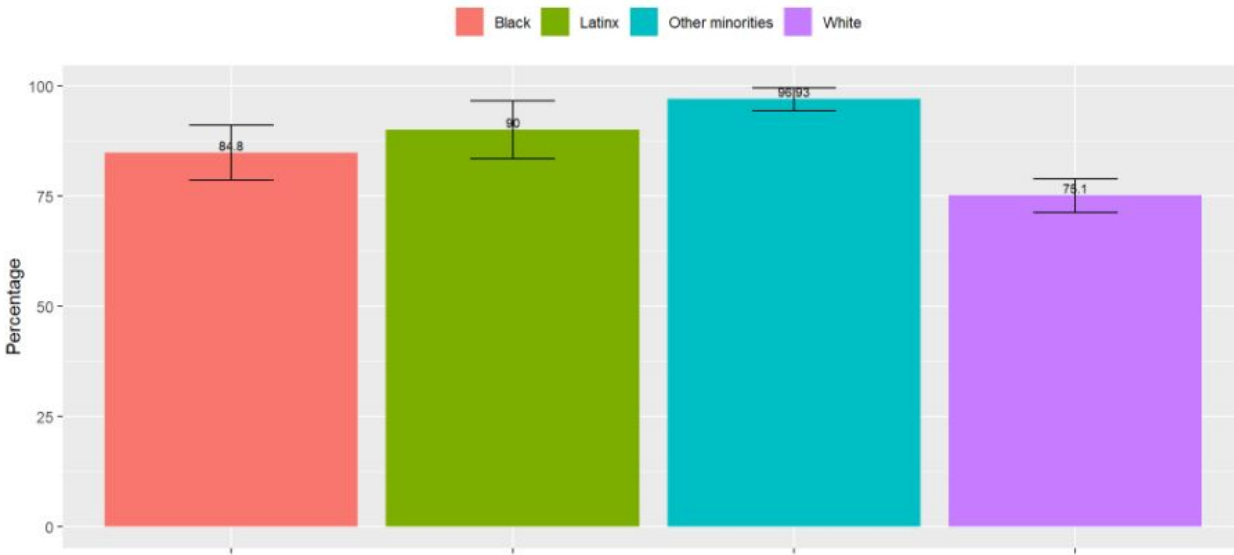
Ideal Child Care Arrangement When Having Equal Access, by income levels



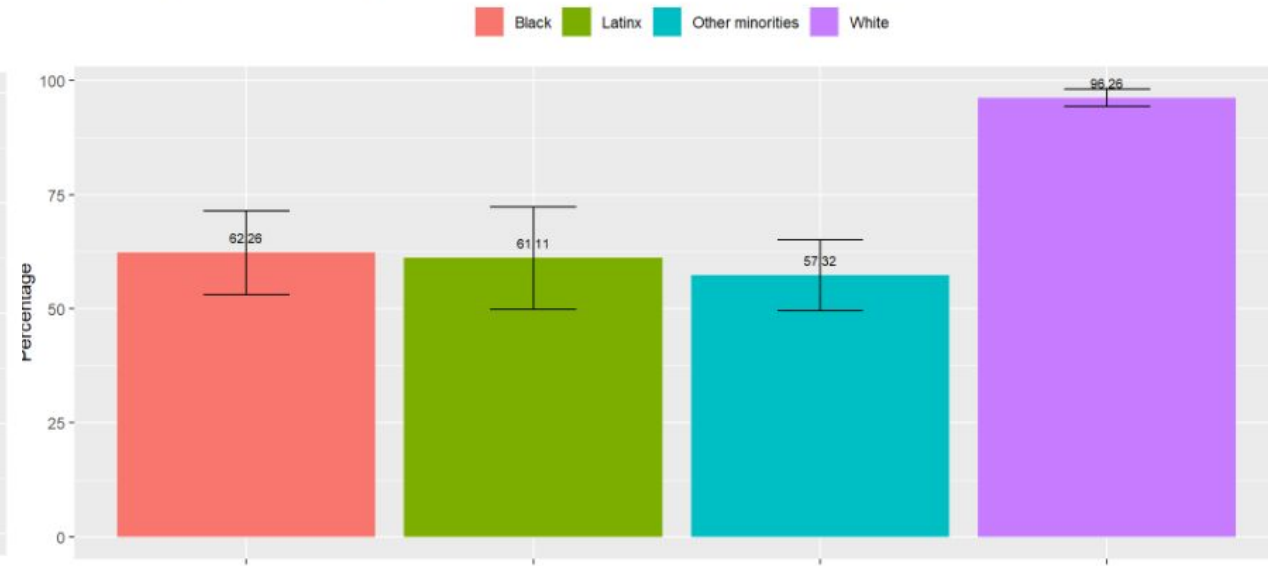
# Child Care Subsidy

# Applied for/Received Child Care Subsidy by Race/Ethnicity

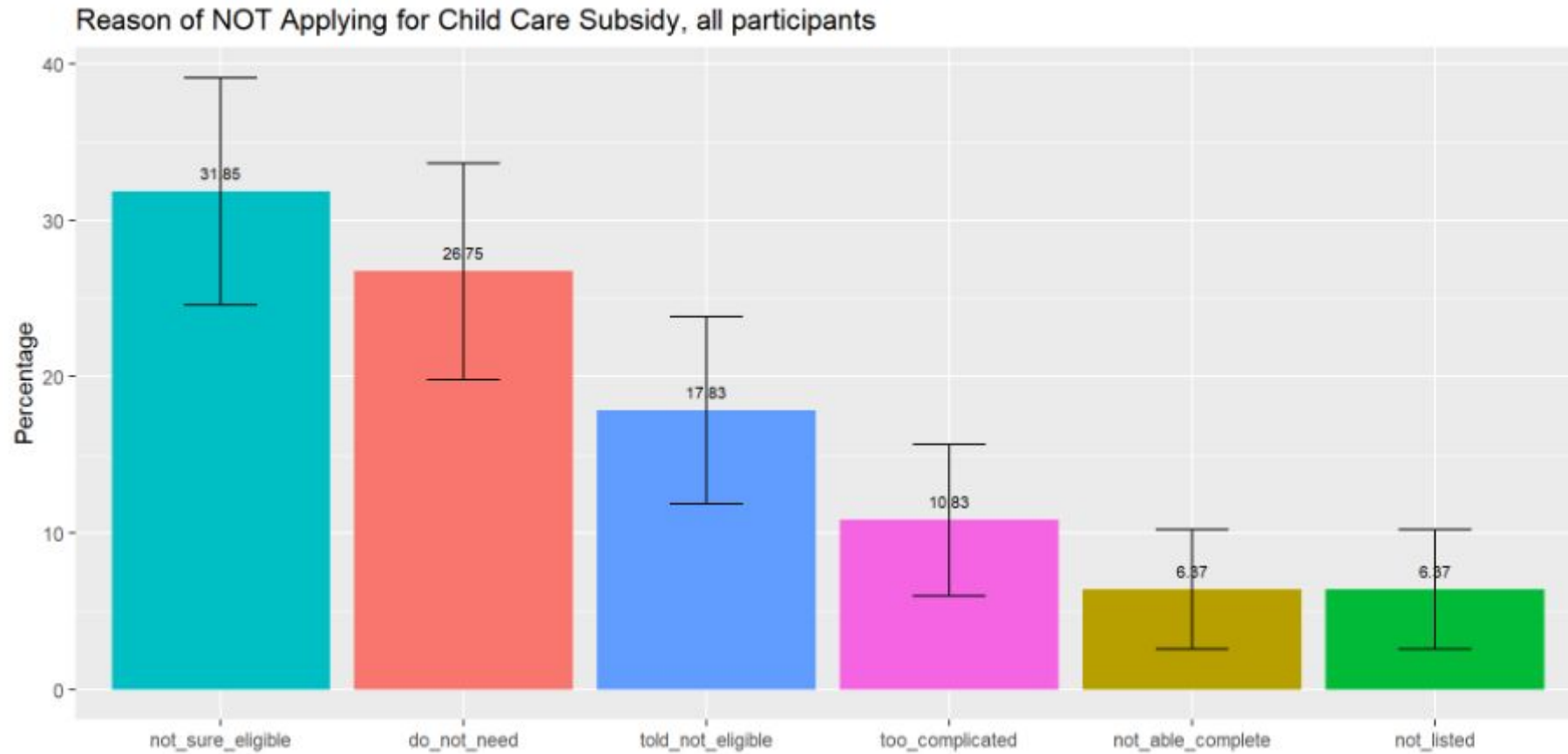
Applied for Public Assistance, by race/ethnicity



Received Child Care Subsidy, by race/ethnicity



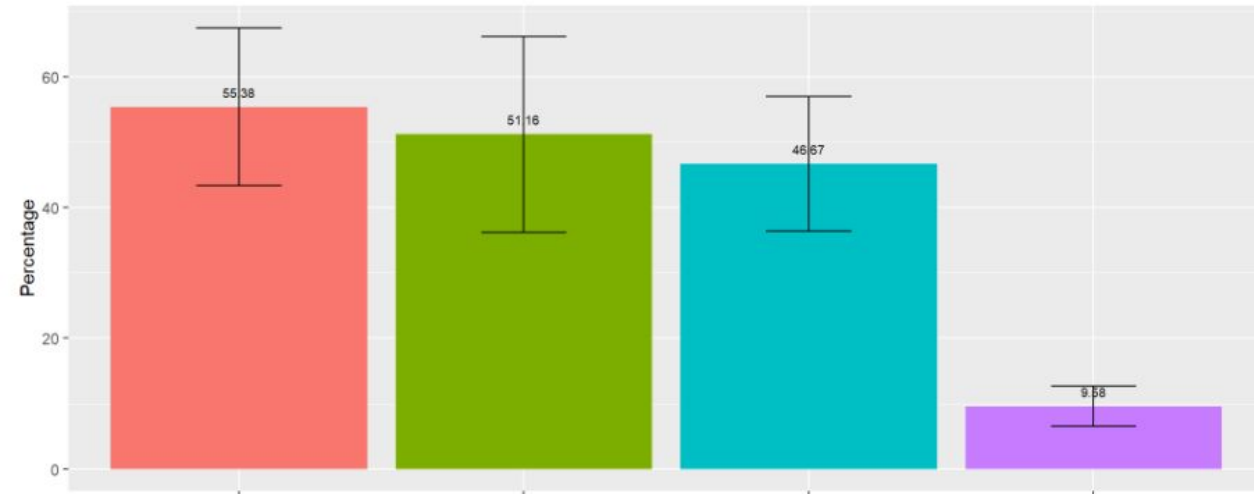
# Reason of NOT Applying for Child Care Subsidy



# Difficulty Finding Accepting Provider & Maintaining Subsidy by Race/Ethnicity

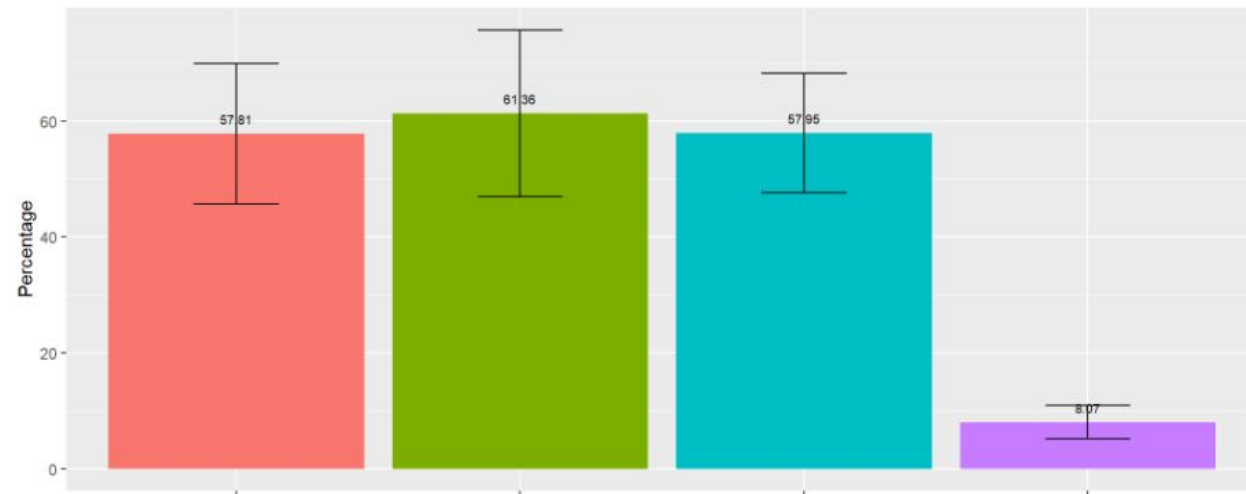
Difficulty Finding Accepting Provider, by race/ethnicity

Black Latinx Other minorities White



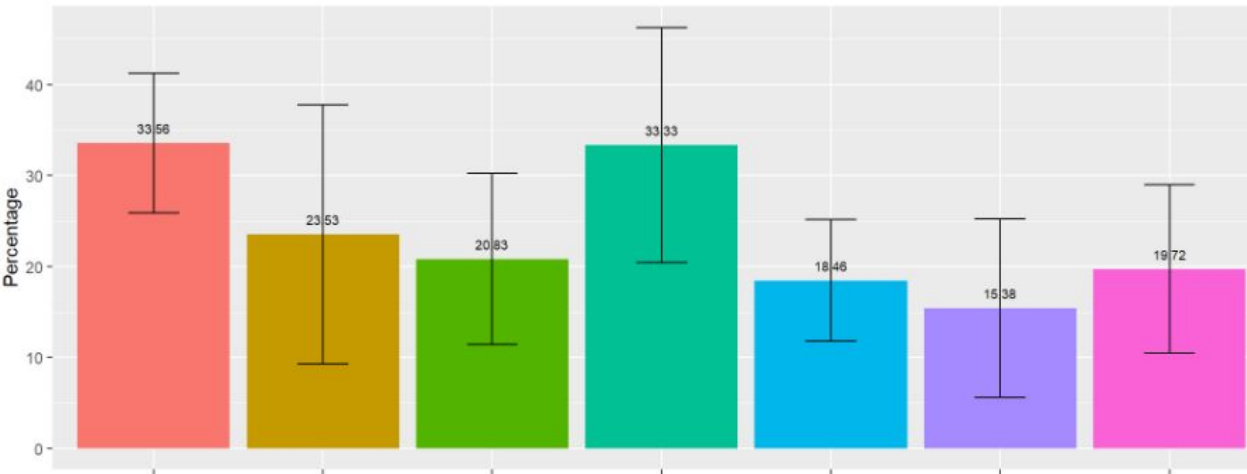
Difficulty Maintaining Subsidy, by race/ethnicity

Black Latinx Other minorities White

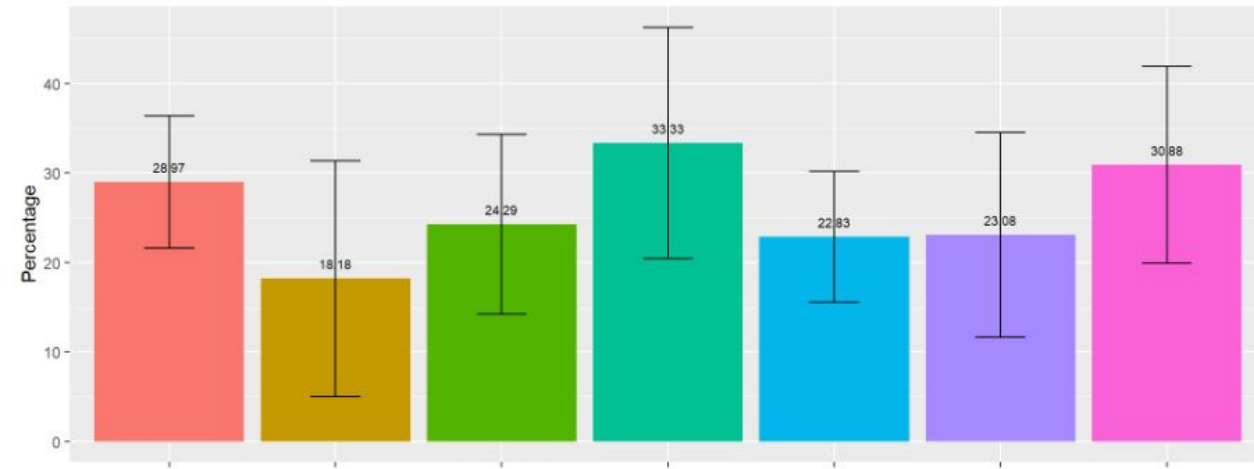


# Difficulty Finding Accepting Provider & Maintaining Subsidy by County

Difficulty Finding Accepting Provider, by county



Difficulty Maintaining Subsidy, by county



# PARENT VOICES

[Our] child care center provides a safe, fun, and educational learning environment for my children. This allows me and my husband to focus on our work. – *Parent in White Pigeon*

It took us over 7 months to find childcare - wait times were 12 to 24 months at most places in the Kalamazoo/Portage area. We drive 40 minutes to an in-home center in Plainwell/Cooper or daycare. – *Parent in Portage*

I am stuck in a job I hate because I can't afford child care if I leave. If I stay at home, we don't make enough money to pay all of our bills. – *Parent in Kalamazoo*

There are a few things that are helping my family right now. We stay close and always communicate and we have adventures and outings for the family. This could be as simple as a quick trip to the park, walks, or visiting museums. – *Parent in Battle Creek*



R



# THANK YOU QUESTIONS & FEEDBACK

**RAPID**

Stanford | Center on  
Early Childhood

pulse)))  
© the W.E. Upjohn Institute for Employment Research